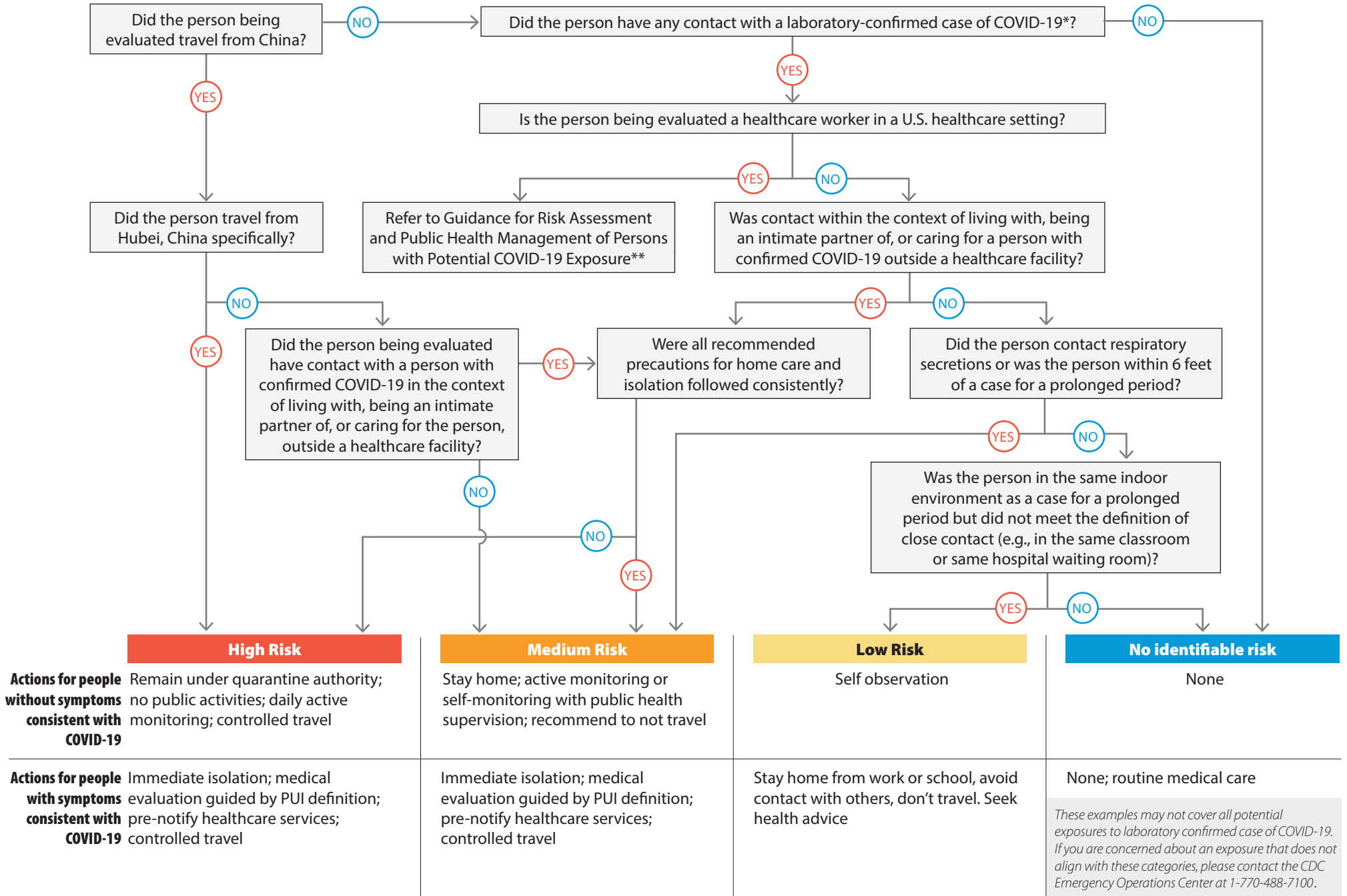


# Coronavirus Disease 2019 (COVID-19) Risk Assessment and Public Health Management Decision Making

Each question refers to within the past 14 days



U.S. Department of Health and Human Services  
Centers for Disease Control and Prevention



\*Or a case diagnosed clinically with COVID-19 infection outside of the United States who did not have laboratory testing

\*\*Healthcare provider (HCP) guidance outlines risk categories to determine work exclusion and monitoring procedures. After identifying risk category in the HCP guidance, use the categories outlined here to determine quarantine requirements.